

Lyra Vale, Sherford

Guide Price £535,000

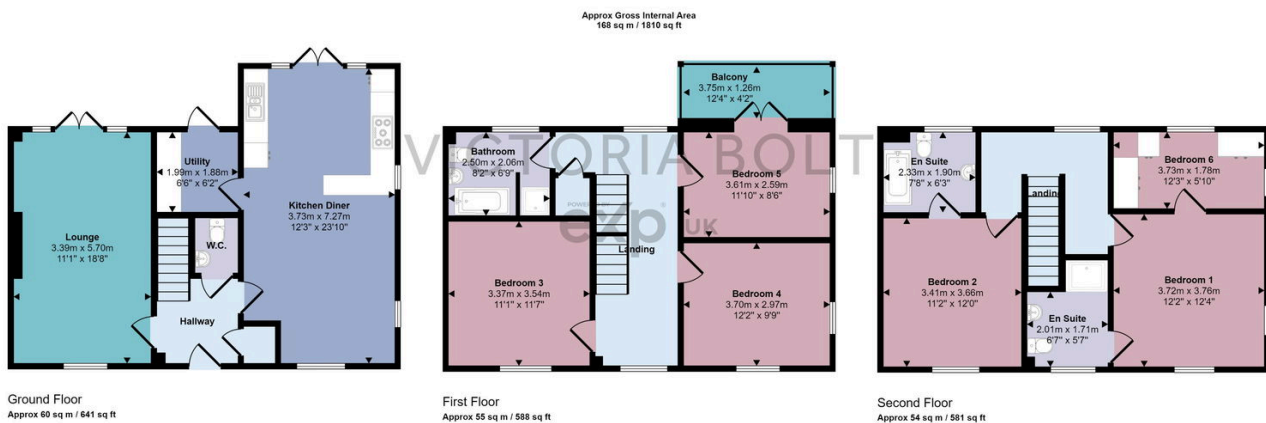
5 4 1



To arrange a viewing, please quote VB0375. This beautifully presented five-bedroom detached family home in the popular new town of Sherford offers modern living across three floors. The property features an open-plan kitchen/diner with integrated appliances, three double bedrooms on the first floor, including one with a balcony, and another two bedrooms with ensuite, including the master bedroom with walk-in wardrobe on the second floor. The low-maintenance rear garden includes a patio, decking, and artificial grass, with secure parking for two cars. Conveniently located near Plymouth City Centre and South Hams countryside, this home is ideal for family living.

Key Features

- Five-bedroom detached home
- Dual-aspect open-plan kitchen/diner
- Modern kitchen with integrated appliances
- Utility room
- Downstairs WC
- Family bathroom & two ensuites
- Enclosed rear garden
- Secure parking for two cars
- Convenient location
- To arrange a viewing, please quote VB0375



This floorplan is only for illustrative purposes and is not to scale. Measurements of rooms, doors, windows, and any items are approximate and no responsibility is taken for any error, omission or mis-statement. Icons of items such as bathroom suites are representations only and may not look like the real items. Made with Made Snappy 360.